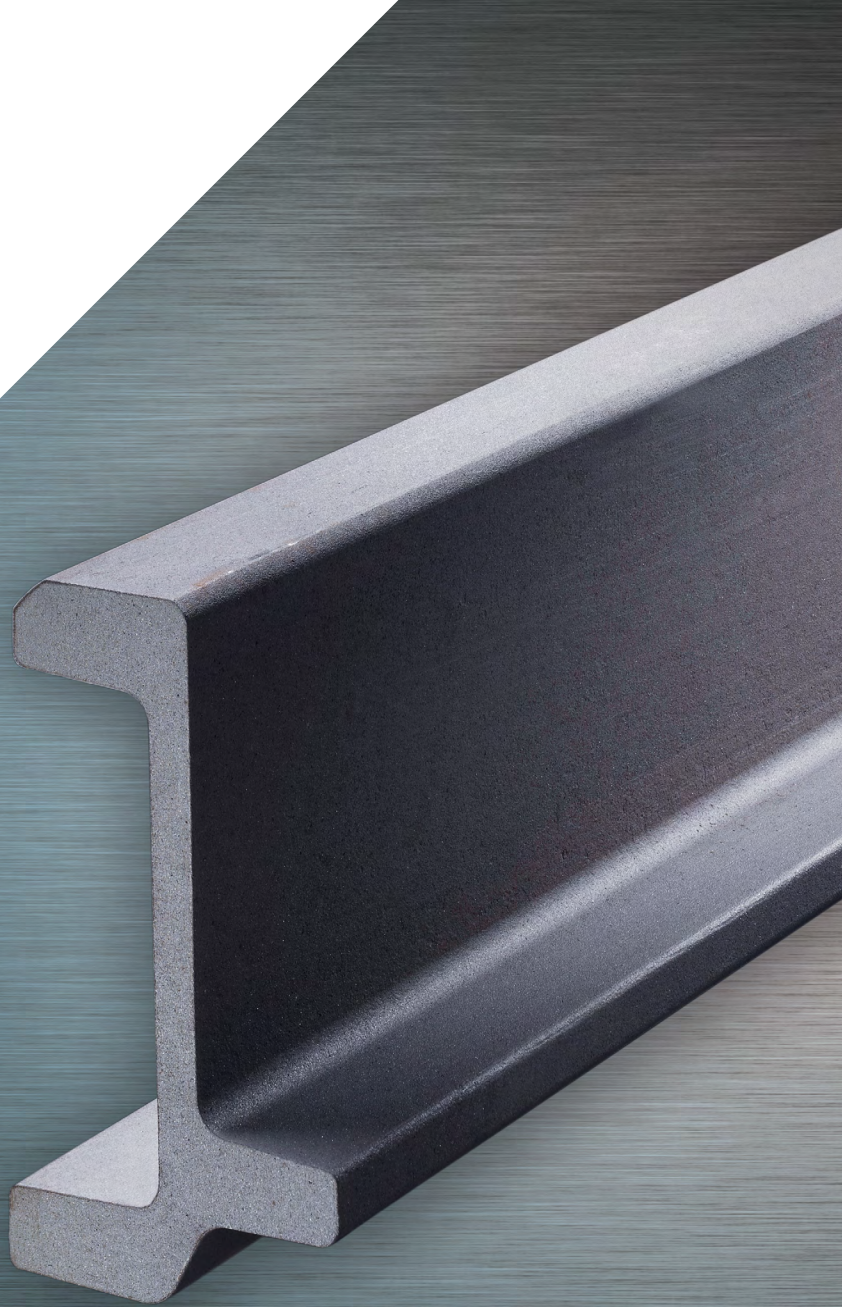




**BRITISH  
STEEL**



# Special Profiles

Unique applications require  
unique steel solutions

**BUILDING STRONGER FUTURES**

# Special Profiles from British Steel

British Steel is a world leader in the production of steel - producing over 2.8 million tonnes every year across the product range. We have facilities across the UK and France, supplying high quality steel products around the world.



## Special profiles from British Steel

Unique applications require unique steel solutions. This often requires a range of fabrication processes such as cutting, bending and welding to achieve the desired result. All of these processes add time and cost to your manufacturing process.

Special profiles from the Skinningrove Mill in Northern England offer our customers the opportunity for significant manufacturing cost savings by offering a rolled product of the desired final shape.

Our twin-stand cross-country mill offers

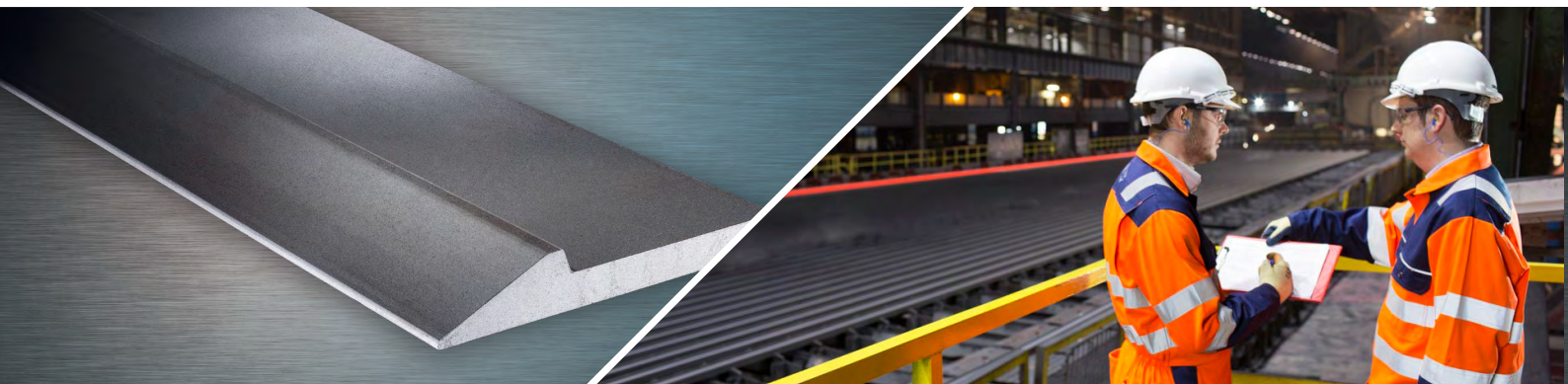
- Fast changeover time (40 minutes) and therefore shorter economical rolling cycles.
- This means, customer specific sizes and designs can be rolled in 4 hour windows (150 tonnes approx).
- This enables the designer to consider a rolled solution instead of a fabricated one thus optimising the manufacturing process.

## Unique product shapes

No matter how unique your product shape, our roll design experts can design a product that meets your needs. Our twin-stand cross-country mill design allows us to design to your exact requirements and close dimensional tolerances, fully compliant with both customer and national standards and specifications.

## Our product range

- Track shoe
- Fork arm flats
- Forklift mast
- Cutting edges
- Crane rail
- Bulb flats
- Top hat shaft guides
- Cathode collector bars





Product grouping	Specific product	Width range (mm)	Weight range (kg/m)	Product application
Track shoes	Single grouser	180-369	18-103	Undercarriage – bulldozers
	Double grouser	202-308	28-72	Undercarriage – bespoke
	Triple grouser	170-266	19-70	Undercarriage – excavators
Cutting edges	Single bevel	150-305	18-44	Excavator bucket wear-part
	Double bevel	200-480	24-163	Excavator bucket wear-part
	Grader bars	150-200	13-38	Excavator bucket wear-part
	Arrowheads	200-260	31-41	Excavator bucket wear-part
Cross rails	Cross rail angles	On request		
Baseplates	Baseplates	On request		
Forklift masts	Beams	98-230	22-87	Assembled forklift mast
	Channels	86-410	12-105	Assembled forklift mast
	J sections	100-220	22-48	Assembled forklift mast
	Offset J sections	130-220	22-48	Assembled forklift mast
	Carriage bars	60-180	39-75	Forklift forks mounting bar
Fork arm flats	Fork arm flat	150-200	45-150	Manufacture of forklift forks
Crane rails	A range + special sections	65-150	43-150	Floor/gantry crane track
Shaft guides	Top hat guides	300-320	55-71	Vertical mine skip guide
Mining conveyors	Conveyor channels	On request		

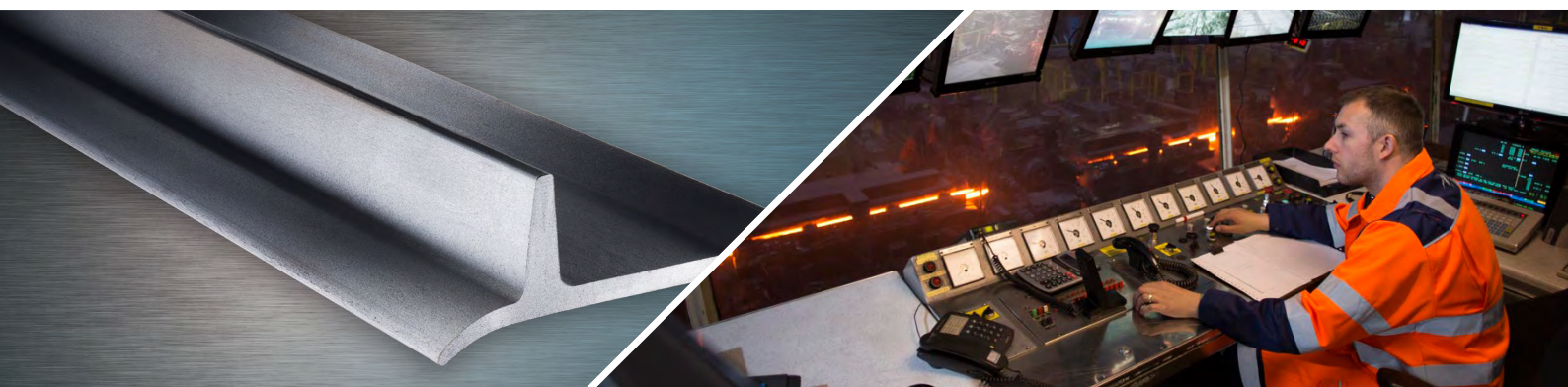
### Property requirements

Steel feedstock is supplied from our modern steel making facility in Scunthorpe and is designed around your product needs by our experts.

Property requirements	
Structural steels	EN 10025:2 ASTM A572, CSA G40.21, SANS 50025:2
Crane rails	Designed for high load and wear, high carbon steel including DIN 536 part 1
Cathode bars	Class leading ultra low carbon high purity steel for low resistivity
Track shoe and cutting edge	Boron treated high hardness for wear resistance
Bulb flats	Ship classification rules

### Quality assurance

ISO 9001 and ISO 14001 approved.





**BRITISH  
STEEL**

## **BRITISHSTEEL.CO.UK**

**A** | PO Box 1, Skinningrove, Saltburn by the Sea, TS13 4ET, United Kingdom  
**T** | +44 (0)1287 593124 **E** | [specialprofiles@longssteel.com](mailto:specialprofiles@longssteel.com)

Care has been taken to ensure that the contents of this publication are accurate, but British Steel Limited and its subsidiaries and associated undertakings (having the meaning set out in the Companies Act 2006) do not accept responsibility or liability for errors or information that is found to be misleading.

Copyright British Steel 2016

British Steel UK Limited is registered in England under number 09438207 with registered office at Administration Building, Brigg Road, Scunthorpe, DN16 1BP.

**BUILDING STRONGER FUTURES**

English language: SPPB:ENG:042016